

OPENING ONCOLOGY TRIALS TO MORE PATIENTS

85%

OF PATIENTS ARE UNAWARE OF CLINICAL TRIALS AS A TREATMENT OPTION



32.6 MILLION people are living with cancer worldwide (within 5 years of diagnosis)²



BY NUMBERS IN THE UNITED STATES



1.7 MILLION new cancer cases diagnosed in 2015³



13.8 MILLION people living with cancer³



NEARLY 11,474 cancer trials are currently enrolling patients⁴

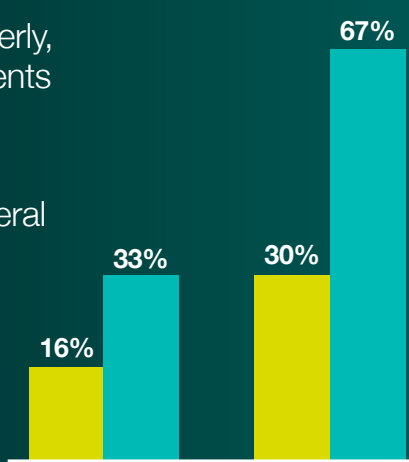


ONLY 3% of cancer patients have participated in a trial⁵

CERTAIN GROUPS UNDERREPRESENTED IN TRIALS

67% of oncology population is elderly, yet represent only 25-30% of patients in clinical trials⁶

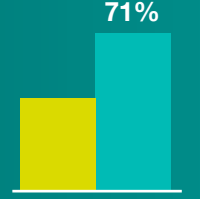
Minorities represent 33.1% of general U.S. population, only 16.7% of industry-funded trials⁷



LACK OF PATIENTS IS DELAYING DEVELOPMENT OF NEW CANCER THERAPIES



The typical trial extends recruitment by 71%⁸



After extension, 20% of trial sites fail to enroll necessary patients or any patients at all⁹



CURRENT RECRUITMENT-BY-ADVERTISEMENT PROCESS DELIVERS UNPREDICTABLE RESULTS

1 HOW CLINICAL TRIALS FIND PATIENTS

Companies choose sites for the clinical trial based on estimates from data that, due to regulations, do not identify actual patients



2 HOW PATIENTS FIND CLINICAL TRIALS

Advertisements push patients to doctors

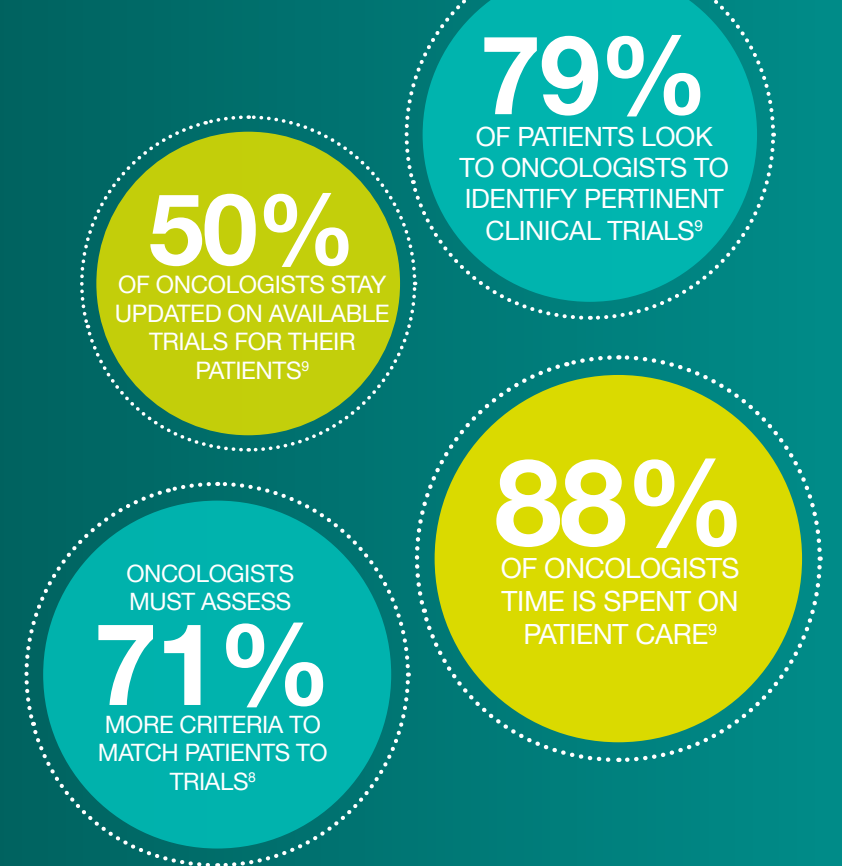


3 ENROLLMENT FREQUENTLY FALLS SHORT OF ESTIMATES

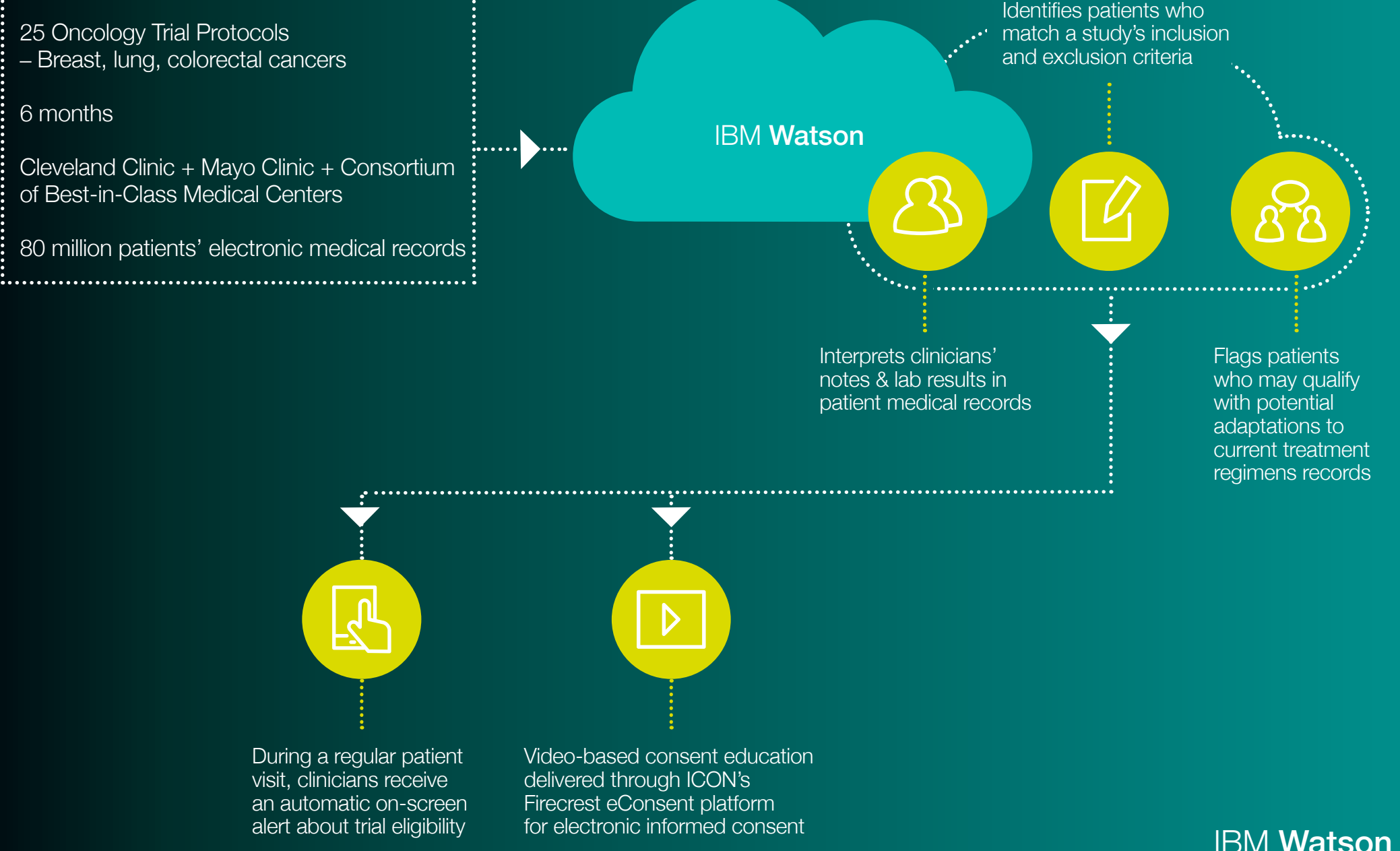
- Site A - 12/18
- Site B - 22/30
- Site C - 29/40
- Site D - 18/18
- Site E - 40/40



ONCOLOGISTS ARE HAVING A HARDER TIME FILLING IN THE GAPS



ICON-IBM WATSON PILOT PROGRAM & THE FUTURE OF CLINICAL TRIAL RECRUITMENT & PLANNING



GOING FURTHER: IBM WATSON CLINICAL TRIAL MATCHING AND ICON MAY ACCELERATE PLANNING FUTURE ONCOLOGY STUDIES

- Instantaneous analysis of patient populations
- Drug developers can mitigate unnecessary delays by simulating the effect of changing the procedures in a trial on access to actual patient populations
- Drug developers can select sites based not on estimates, but actual patients with access to a trial's investigators