



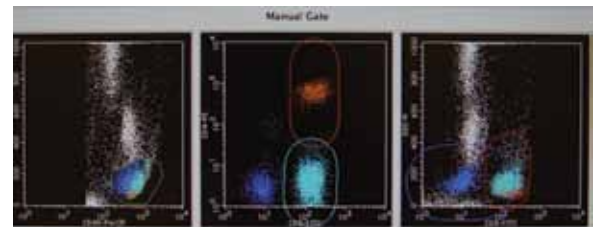
# Excellence in Flow Cytometry Services

Delivering the most highly advanced science while meeting each client's unique needs is ICON Central Laboratories' primary focus. Our Flow Cytometry services exemplify this special commitment.

At ICON Central Laboratories, we have extensive experience supporting clinical trials in the areas of oncology, immune modulation disorders and infectious disease. We understand that these protocols often require much more than the basic testing services offered by most central laboratories. In fact, sponsors often tell us it is challenging to find a laboratory that can provide the specialized flow cytometry services their trials require while also offering global service capabilities and comprehensive data management.

ICON Central Laboratories is pleased to offer a more advanced level of flow cytometry service that includes:

- Technical collaboration;
- Test methodology transfers;
- Custom assay development.



## Responding to Unique Customer Requirements

When pharmaceutical and biotechnology companies require custom testing capabilities, experienced staff from ICON Central Laboratories' Flow Cytometry department will meet with the sponsor's senior scientists to gain a thorough understanding of the testing methods and parameters required. Working closely with the client, they:

- Develop the flow cytometry methodology to the required specifications;
- Obtain appropriate material from a reputable supplier of disease-specific specimens so that split sample comparisons can be performed;
- Provide the sponsor with validation data for approval;
- Develop a sponsor-approved, customized standard operating procedure (SOP) for performing their assay;
- Collaborate with the sponsor regarding special requirements, including listmode and scatterplot reporting.

## Quality is a Key

Rigorous quality control is an important part of ICON Central Laboratories' custom flow cytometry service. Our quality control program includes:

- Utilization of eight-color instrumentation and identical testing platforms in our U.S., Bangalore, European and Singapore laboratories to ensure standardized results;
- Use of same lot number or custom preparation of antibody reagents to maintain consistency of signals;
- Thorough training of all laboratory personnel performing the test to ensure strict compliance with the SOP;
- Use of beads, human cells and cRBCs to calibrate the instrument so that any shifts in signals can be readily identified and traced to their source;
- Two levels of laboratory review and confirmation prior to releasing test results.



## Our Commitment

At ICON Central Laboratories we are committed to doing more for our clients.

Our special capabilities in flow cytometry are just one of the ways we make a difference for sponsors that select ICON Central Laboratories for their clinical trials. We believe these services, combined with our extensive menu of safety and efficacy testing, globally integrated data management services, worldwide laboratory and logistical capabilities and comprehensive clinical investigator support are the reasons that nearly 90% of our business is from repeat customers.

We look forward to the opportunity to provide the special laboratory testing required for your next clinical trial.

For more information regarding our flow cytometry services, visit [www.iconplc.com](http://www.iconplc.com), or email us at [labinfo@iconplc.com](mailto:labinfo@iconplc.com).



UNITED STATES



IRELAND



INDIA



SINGAPORE



CHINA